

Creating a WebTrack account

Using your personal computer open an Internet Browser (i.e. Internet Explorer) and in the address bar type www.bbwebtrack.com (see *fig 1*) and then press enter on the keyboard.

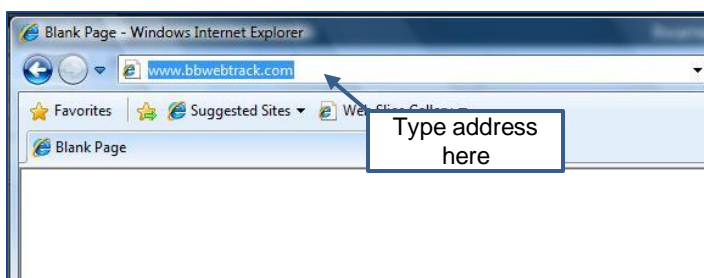


fig 1

You will then be presented with the WebTrack home page (see *fig 2*). At this point you can add the WebTrack home page to your favourites for future access. Beneath **Create New Account** left mouse click on **Register New Account** (see *fig 2*).

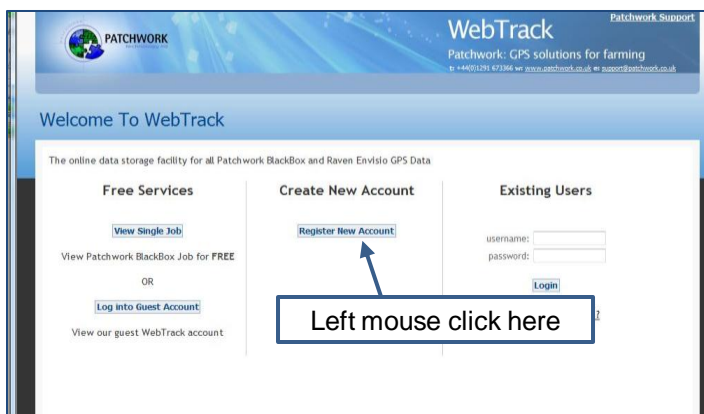


fig 2

This redirects you to the Registration page (see *fig 3*). In order to register for an account enter your details in the boxes provided and once complete left mouse click on **Submit Details**.

N.B. Please ensure you use an active email address and it is typed correctly.

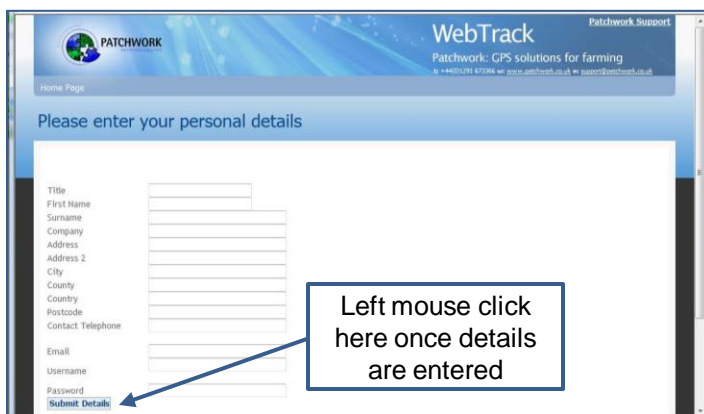


fig 3

A confirmation screen will then appear giving instructions regarding the activation process (See *fig 4*). To return to the WebTrack home page left mouse click on **BBWebTrack Home Page** (see *fig 4*).

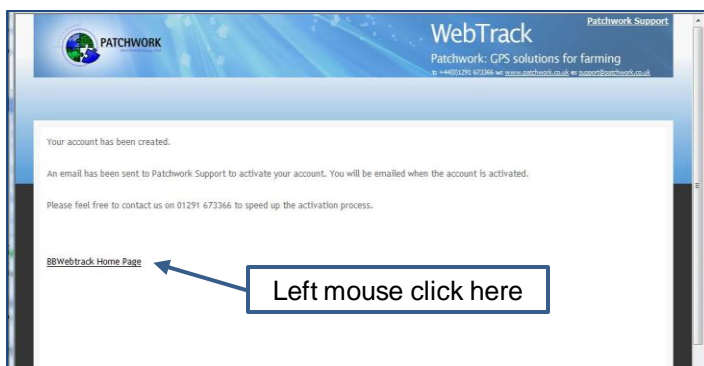


fig 4